



Babcock Wanson UK

ENIM Group

Energy made to Measure

STEAM GENERATORS SERIES VPX RR



3 x Model 2500 RR VPX Babcock Wanson Steam Generators

WIDE RANGE

Available in 12 model sizes from 150 to 5000 kg/h at operating pressures from 5 to 50 barg in open circuit and up to 96 barg in closed circuit.

DESIGN

The VPX steam generator is a completely packaged coil type once through forced circulation unit, fully factory tested and delivered ready to work.

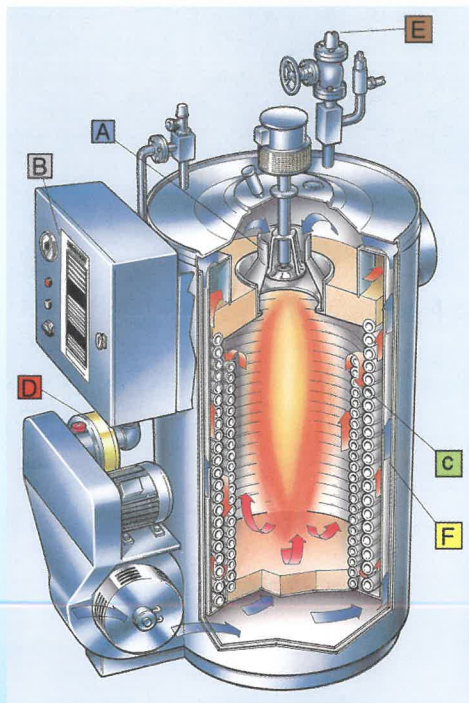
Approved by Lloyds, DNV, BV and other leading international inspecting agencies and built to major design codes such as BS, ISPEL, RGPT, APAVE using high quality internationally approved materials and components.

B CONTROL CABINET

Contains all electrical and electronic operating equipment for safe automatic operation. Suitable for unattended control and integration into BMS or sequence operation systems.

C TUBULAR COIL CONSTRUCTION

Provides exceptional high pressure safety generous heating surface and compact dimensions. This ensures 'optimum' efficiency through self cleaning action of high velocity convection gas across heating surfaces.



A BURNER

Fully integrated design. Gas, oil or dual fuel options, low noise, high availability, low maintenance.

D FEEDWATER PUMP

Quiet efficient, sealed positive displacement rotary design.

E RAPID STEAM RAISING

From cold in as little as three minutes. Low water content means low heat loss and reduced operating costs.

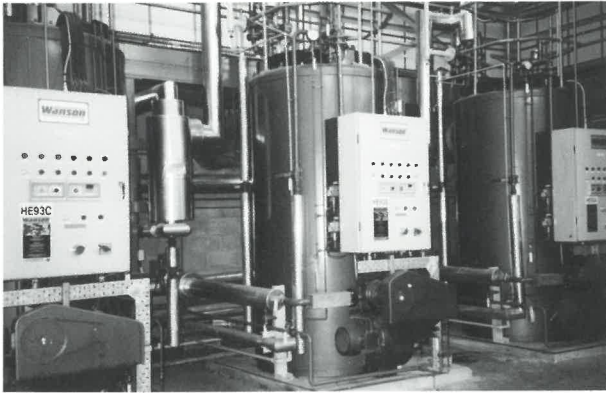
F EFFICIENT INSULATION

Using double skin case with air pre-heat for optimum efficiency.



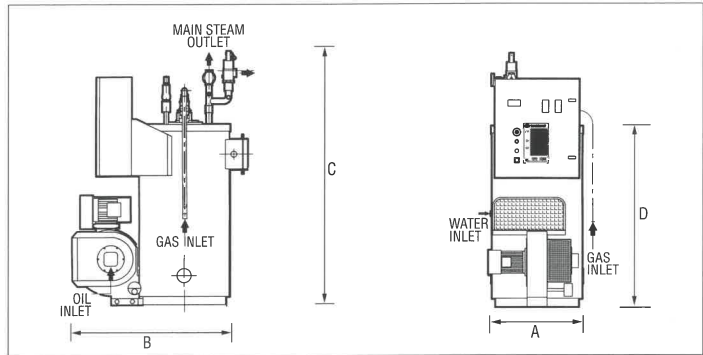
Model 1200 RR VPX Steam Generator





3 x Model 3500 RR VPX Steam Generators

BABCOCK WANSON SERIES VPX RR STEAM GENERATOR



DIMENSIONS (mm)

Model VPX RR	150	250	400	600	900	1200	1500	2000	2500	3500	4250	5000
A	610	610	740	740	850	1025	1170	1430	1550	1890	1950	2100
B	881	881	1067	1167	1380	1550	1730	1880	2082	2627	2670	2950
C	1455	1455	1710	1710	1990	2090	2500	3200	3460	3460	4100	4200
D	1085	1085	1300	1300	1530	1645	1780	2300	2841	2841	3339	3685

TECHNICAL DATA

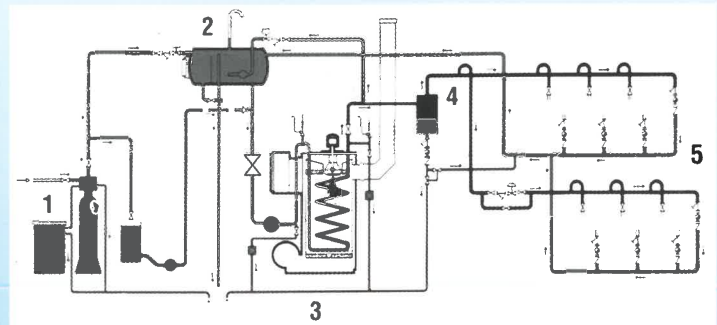
Nominal Output kg/h	150	250	400	600	900	1200	1500	2000	2500	3500	4250	5000
Output F&A 100°C kg/h	161	269	430	644	967	1237	1600	2148	2685	3789	4576	5370
Output kW	106	176	281	423	635	846	1055	1410	1760	2468	2996	3520
Operating Weight kg	180	210	400	450	800	1250	1550	2600	2800	4900	5600	6711
Water Cont. l	12	12	21	34	74	118	160	366	531	777	945	1211
Oil Cons. l/h	12.5	20.8	33	50	75	100	125	165	205	290	350	410
N. Gas. Cons. m ³ /h	13	22	35	53	79	106	133	175	220	305	370	435
Recd Stack Int. dia. mm	203	254	254	305	305	356	406	457	508	610	650	650
Burner Motor kW	0.37	0.55	0.55	1.5	2.2	4.0	4.0	5.5	5.5	11	11	15
Feed Pump Motor kW	0.25	0.25	0.55	0.65	0.65	1.3	1.3	2.2	2.9	4.0	5.5	7.5

Light Oil equivalent to BS 2869 Class D

Heavier oil fuels may be utilised dependent on unit size

Natural gas (G20) GCV 37.8 MJ/m³

SCHEMATIC VPX STEAM SYSTEM



1. Feedwater treatment
2. Feedwater make-up & condensate return tank
3. VPX RR Steam Generator
4. Steam Separator
5. Steam users

- **Compact safe design.** With coil construction pressure vessel explosion risk is removed. The compact design resulting from this feature makes point of use steam raising possible within minimal space requirements. Substantial heat losses are also avoided by minimising steam distribution and condensate return pipework which means lower operating costs.
- **Pedigree** – 40 years of continuous progressive development result in the VPX RR design, a rugged, safe, simple, economic solution to steam raising needs.
- **Steam quality** – The VPX RR units are offered with the proven Babcock Wanson Steam Separator and Drier which ensures minimum heat loss and high steam dryness fraction.
- **Water Treatment** – With all steam raising equipment it is essential to provide properly treated feed water which must be soft, alkaline and free from oxygen. A guidance document on feed water quality is available from Babcock Wanson. The VPX RR steam generator design is much less sensitive to high levels of TDS (dissolved salts and solids) than fire tube boiler designs which means reduced running costs resulting from reduced blow down losses.

After Sales Service – All parts of the TPC B series are replaceable and upgradable and Babcock Wanson UK maintains a well stocked parts store. In addition to a full commissioning service our Service Division, staffed with fully trained, qualified and approved engineers; is able to offer on call as well as planned service and maintenance contracts wherever you are and whenever required.

**“115 years of Babcock – 70 years of Wanson – 42 years of Wanson UK.
There is no substitute for experience.”**



Babcock Wanson UK
ENIM Group

Babcock Wanson UK Ltd 7 Elstree Way, Borehamwood, Hertfordshire WD6 1SA, UK

Tel: 0181 953 7111 Fax: 0181 207 5177 Email: wanson@babcock-wanson.co.uk

Sales and Manufacturing facilities in UK, Belgium, France, Italy, Morocco, Poland, Portugal, Spain, and Switzerland.

The Babcock Wanson Organisation operates in more than 50 countries. This network makes it possible to offer services to Babcock Wanson customers anywhere in the world. Babcock Wanson Company's policy is one of continuous improvement, and the right is reserved to change specifications and dimensions at any time without notice.