



**Babcock Wanson UK**  
ENIM Group

*Energy made to Measure*

# STEAMBLOC **BWB** FIRETUBE BOILERS

A CENTURY OF CONTINUOUS BOILER DEVELOPMENT

178 to 3361 kg/h f/a 100°C



STEAMBLOC **BWB** Series. Steam output 178 to 3361 kg/h f/a 100°C.

- The **STEAMBLOC BWB** range is fully packaged, factory assembled and tested ready for rapid installation and hook up at site. Babcock Wanson also offer installations to a very high standard as well as optional skid mounted assemblies which can incorporate water treatment, blowdown vessel and interconnecting pipework. Enclosures for external operation are also available tailor-made to suit the selected location. Stainless steel polished insulation cladding is provided for reducing heat loss and adding good looks.

## STANDARD FEATURES

- The smaller end of the Babcock Wanson STEAMBLOC series of fire tube boilers is covered by the **BWB** range with outputs between 112kW and 2108kW (178kg/h and 3361kg/h f/a 100°C).
- The STEAMBLOC **BWB** boiler is constructed in accordance with the latest International Standards and is approved 97/23 CE by Lloyds 0038.
- Both light oil and gas burners are selected to ensure exact performance matching and are chosen for their high efficiency, low emission and low noise characteristics.
- The STEAMBLOC **BWB** is of high efficiency design with localised enhanced heating surface which provides optimum efficiency, stability of water level and steam release within the boiler.
- The STEAMBLOC **BWB** is simple and compact in design and is extremely easy to maintain with complete internal fireside access from both ends.
- Controls and safety devices are in accordance with current and developing Standards and Guidance Documents.



BCEMA



BS EN ISO 9001:2000 FM 29856

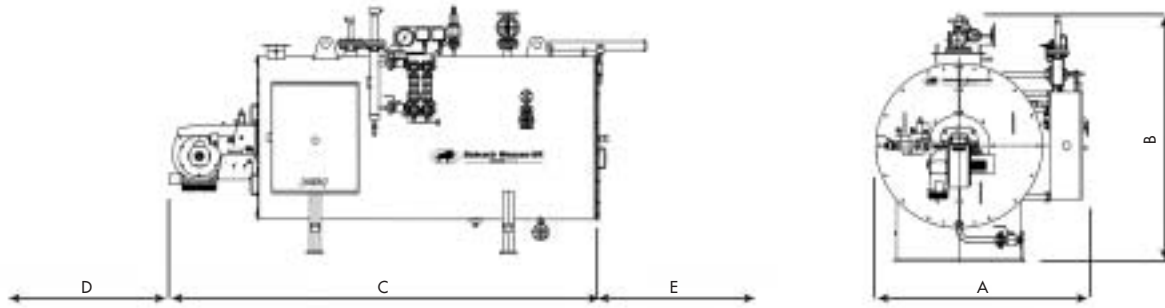
## OPTIONAL FEATURES

- Economiser for additional fuel efficiency approx 4%
- Controls for unattended operation
- Turnkey design and installation
- Burners for handling non standard fuels available
- Ancillary boiler house items
- Dual fuel firing



Babcock Wanson LNTA burner designed for the best possible boiler/burner match.

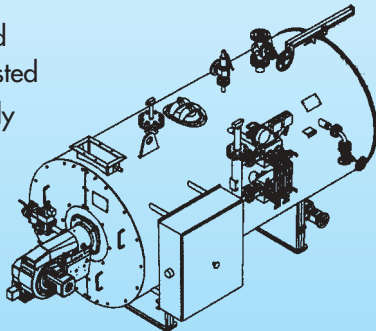
## STEAMBLOC BWB PERFORMANCE AND DIMENSIONS



MODEL NO:			BWB16	BWB25	BWB43	BWB65	BWB100	BWB150	BWB200	BWB250	BWB300	
Steam Output F & A 100°C	kg/h		178	279	477	729	1121	1680	2241	2801	3361	
Thermal Output	kW		112	175	299	457	703	1054	1406	1757	2108	
Fuel consumption gasoil	litres/h		13	20	34	51	79	118	158	198	236	
Natural gas (G20)	m <sup>3</sup> /h		13	21	36	54	83	125	166	208	248	
Weight	Full	kg	1863	2581	3185	3563	5300	6680	8049	8049	10825	
	Empty	kg	1300	1595	1906	2163	3200	3946	5073	5073	6603	
Recommended stack i/dia	mm		203	250	250	300	300	400	500	500	600	
Dimensions	A	mm	1400	1400	1470	1520	1740	1920	1900	1900	1950	
	B	mm	1514	1514	1595	1646	1780	1960	1930	1930	1980	
	C	mm	2075	2775	3175	3320	3840	4040	4920	4920	6020	
Tube withdrawal space	Front	D	mm	590	1060	1270	1360	1900	1675	2520	2320	3420
	Alternative Rear	E	mm	700	1400	1600	1700	2150	2150	2950	2950	4050

Standard design pressure ranges: 10, 15 and 18 barg. Specification and dimensions are subject to change.  
For larger boiler sizes see **STEAMBLOC BWS** datasheet - Up to 10,000kg/h

- Fully packaged and factory tested
- Delivered ready to start up



### ABOUT US

- Babcock Wanson is part of the International CNIM organisation World leaders in environmental and energy industries.
- Babcock and Wanson have been boiler builders for 125 and 75 years respectively and 47 years together.

■ **SERVICE AND PLANT CARE** - Babcock Wanson worldwide specialise in Service and plant care with particular accent on preventative maintenance for all areas of our business. In the UK our large team of fully qualified Service Engineers is able to provide the essential aftercare needs of the wide variety of equipment available from our Group from Boilers to Thermal Oxidisers and from Air Heat Systems to Water Treatment and Thermal Fluid Systems. These service facilities are available from our other Group Companies throughout Europe and major industrial areas across the world.

■ **COMPLEMENTARY PRODUCTS** - Babcock Wanson complementary products include Air Heating Equipment for space and process applications, Thermal Fluid Heaters and systems for advanced energy and operational saving, coil type Steam Generators up to 8t/h, Fire Tube Steam Boilers up to 25t/h, Thermal Oxidisers and VOC Abatement Plant together with all associated equipment plus the Turnkey option.

**“125 years of Babcock – 75 years of Wanson – 47 years of Babcock Wanson UK.  
There is no substitute for experience.”**



**Babcock Wanson UK Ltd** 7 Elstree Way, Borehamwood, Hertfordshire WD6 1SA, UK

Tel: +44 (0) 20 8953 7111 Fax: +44 (0) 20 8207 5177 email: [info@babcock-wanson.co.uk](mailto:info@babcock-wanson.co.uk) Web: [www.babcock-wanson.co.uk](http://www.babcock-wanson.co.uk)  
Sales and Manufacturing facilities in United Kingdom, France, Italy, Morocco, Central Europe, Portugal, Spain and Switzerland.

The Babcock Wanson Organisation operates in more than 50 countries. This network makes it possible to offer services to Babcock Wanson customers anywhere in the world.  
Babcock Wanson Company's policy is one of continuous improvement and the right is reserved to change specifications and dimensions at any time without notice.